

ALLEN JACK+COTTIER

澳大利亚，悉尼 / Sydney, Australia

## 法蒂玛女士天主教教堂和教区中心

# Our Lady of Fatima Catholic Church and Parish Centre

AJ+C 建筑设计集团公司

Allen Jack+Cottier

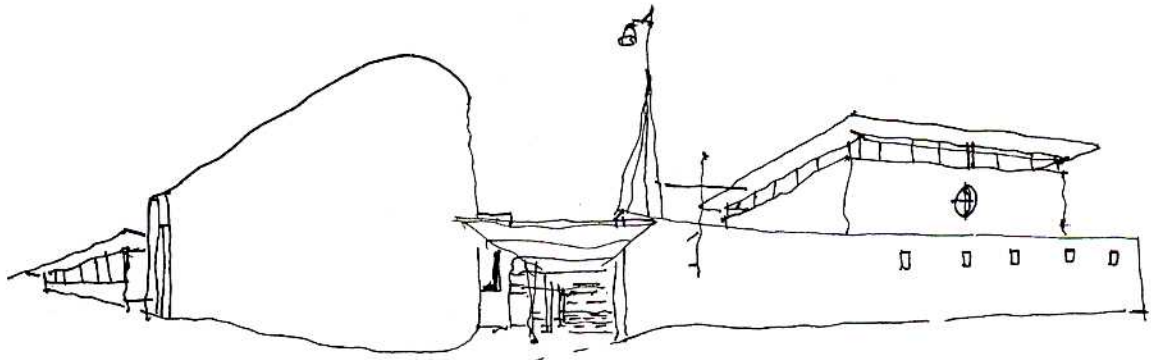


AJ+C 在悉尼一个典型的郊区地段设计了一个新的天主教教堂和教区中心，该建筑虽然在外形上十分现代，但却反映了当今天主教教义的教义。其木质的屋顶结构、圆形窗户和回廊的浓郁色彩都能引起人们对传统教堂的回忆。

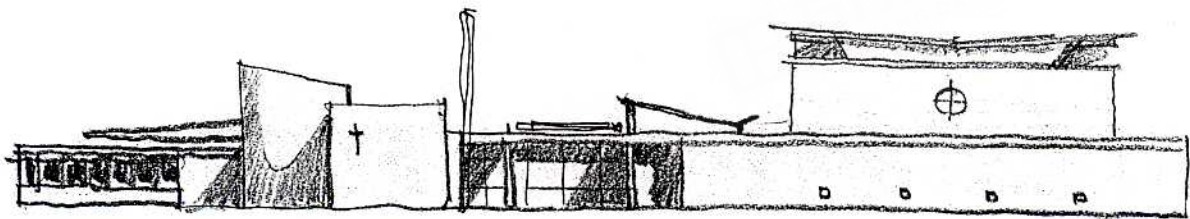
在祭坛的两边对称地安置了600人的阶梯式座位，方便教民们进行圣餐礼。清晰的

While contemporary in form, AJ+C's design of a new Catholic Church and Parish Centre in a typical outer Sydney suburb reflects current Catholic doctrine. It also evokes 'memories' of traditional church forms via the timber roof structure, circular windows and the rich colours of the ambulatory.

Symmetrically disposed tiered seating for 600 is situated on either side of the altar, drawing the congregation into an immediate participation in the liturgy. The heightened religious experience is enhanced by excellent sight



构思草图 1 / conceptual sketch 1



构思草图 2 / conceptual sketch 2







视线让人们有更强烈的宗教体验,而天窗的自然光线和自然通风系统能使人在教堂中感到舒适并与自然融合。在教堂内,长长的回廊通过采用低天花板、柱子和深色的墙壁产生了强烈的空间差异。在其上方是白色的隔音花墙。

屋顶由7根框架支撑。每一根框架由回廊的柱子固定,并通过一排倾斜的杆件联结。这种构造的意图是为了提供独立的屋面支撑,而不遮挡密封的无框玻璃天窗。这种门式框架唤起了人们对哥特式木质屋面体系的记忆,隐喻着信徒与天界的交流。

在教堂之外,坐落着有80个座位的日

lines whilst even clerestory lighting and a system of natural ventilation provide for temporal physical and sensory needs. Within the church, distinct spatial differentiation is achieved in the perimeter ambulatory by means of a low ceiling, columns and deeply coloured walls. Hovering above it sit the white painted upper walls of perforated acoustic panels.

A delicate filigree of 7 propped portal frames provides structural support of the roof. Each frame is braced from the ambulatory columns and in turn carries the roof on a series of raked struts. The generative idea of the structure developed from a desire to provide independent roof support without obscuring the seamless ribbon of mullion-less clerestory glazing. Memory of traditional Gothic roof carpentry is embodied in the portal frames, metaphorically connecting the terrestrial worshipper to the celestial realm beyond.

间小礼拜堂，该建筑被有意设计在成直角的围墙之外，另外还有教区办公室、会议室和相关服务区。与教堂里的设置相反，小礼拜堂的座位采用了扇形排列，以满足比较传统的信徒需要。礼拜堂的曲线形设计更加自由，就像船头的形状一样，是这个封闭和含蓄的教堂中较为开放的部分。

**奖项：**

2000年获(NSW)最佳木材使用奖，建筑大师奖（与柯维因合作）

2000年获建筑大师奖（与柯维因合作）250万美元以下最佳公共建筑（NSW）

**作者：**Allen Jack+Cottier

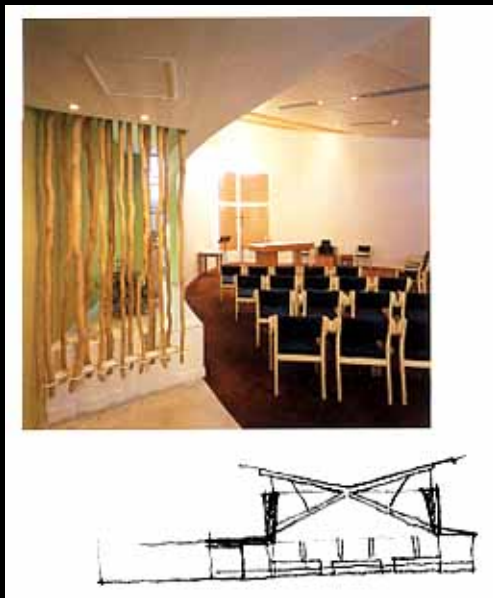
**收稿日期：**2004年11月

Beyond the church, deliberately skewed out from the orthogonal grid, sits the 80-seat Day Chapel. Beyond are parish offices, a meeting room and associated service areas. In contrast to the arrangement of the church, the seating is arranged in radiating rows to accommodate the needs of more traditional worshippers. Freer planning is expressed in its curvilinear form of the Chapel, projecting like the prow of a ship, a single extroverted gesture in an otherwise cloistered and introspective church.

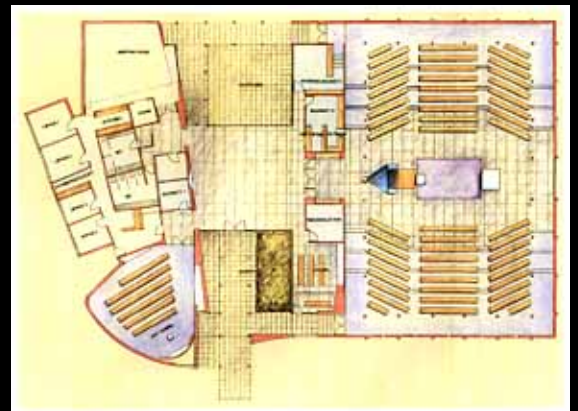
**Awards**

2000 Best Use of Timber in any building (NSW) Master Builders Awards (in association with Co-Wyn)

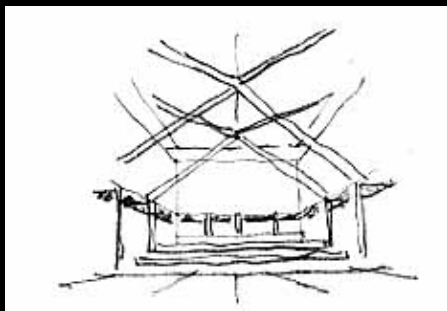
2000 Master Builders Awards (in association with Co-Wyn) - Best Public Building under \$2.5m (NSW)



构思草图 3 / conceptual sketch 3



首层平面 / first floor plan



构思草图 4 / conceptual sketch 4



# 法蒂玛女士天主教教堂和教区中心

作者: [AJ+C建筑设计集团公司](#)  
作者单位:  
刊名: [建筑创作](#)  
英文刊名: [ARCHITECTURAL CREATION](#)  
年, 卷(期): 2005, ""(1)  
被引用次数: 0次

本文链接: [http://d.g.wanfangdata.com.cn/Periodical\\_jzcz200501023.aspx](http://d.g.wanfangdata.com.cn/Periodical_jzcz200501023.aspx)

授权使用: 广东商学院图书馆(gdsxy), 授权号: 94612f8c-a36a-42a1-ba2b-9e520016f4a6

下载时间: 2010年12月20日